

CBD20/25/30-460 Electric Pallet Truck



Configuration and performance

- Electronic power steering system, light and low noise;
- AC Driving system, NO carbon brush, maintenance free;
- Automatic lifting limit, safety, energy saving;
- Drive unit floating bodies with patent design;
- Side-way battery, easy to replace;
- Electromagnetic, regenerative braking system.
- The LFP model lithium batteries are fast charging and efficient.

Safety

- Curve automatic deceleration devices, more safe;
- Stepless speed control system, safe and quiet;
- Controller with Multiple automatic protection;
- Emergency reversing device/Emergency brake switch.

Option

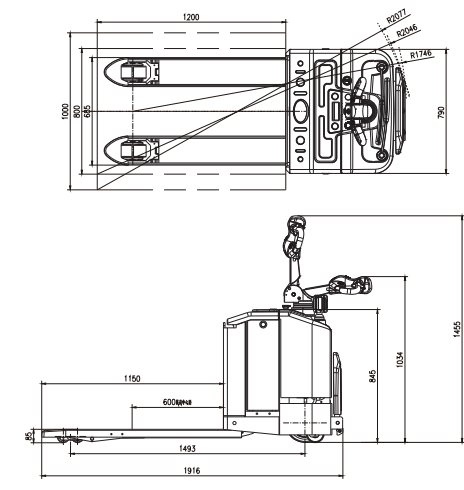
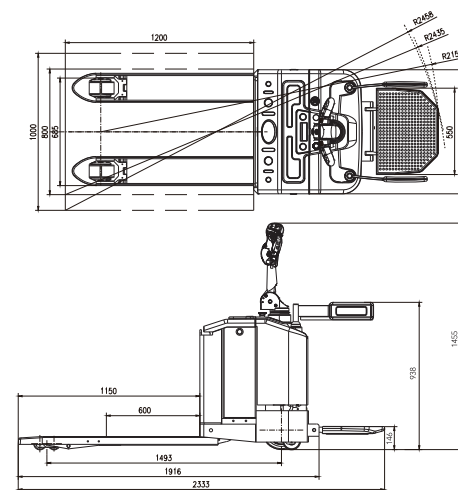
- Lithium battery

Side-loaded battery EPS|AC

Steering automatic deceleration

Feature			
1.1	Model		CBD20/25/30
1.2	Configuration No.		460
1.3	Loading capacity	kg	2000/2500/3000
1.4	Load center	mm	600
1.5	Wheel base	mm	1493
1.6	Operating type		Ride On
Wheels			
2.1	Wheels type		PU
2.2	Wheel quantity Driving wheel/Balance wheel/Bearing wheel		1/2/4
2.3	Driving wheel size	mm	φ 248×75
2.4	Bearing wheel size	mm	φ 84×80(Double wheels)
2.5	Balance wheel size	mm	φ 115×55
Dimension			
3.1	Min.fork lowered height	mm	85
3.2	Max.fork lifting height	mm	205
3.3	Max.lifting height	mm	120
3.4	Overall fork width	mm	550/600/650/685
3.5	Inside width between forks	mm	210/260/310/345
3.6	Fork length	mm	1150/1200
3.7	Fork width	mm	170
3.8	Fork thickness	mm	75
3.9	Overall length	mm	1916/2333
3.10	Overall width	mm	790
3.11	Overall height(With handle)	mm	1455
3.12	Overall height(Without handle)	mm	845
3.13	Min.Turning radius	mm	1746/2158
3.14	Min.Aisle width for pallets 800×1200	mm	2046/2435
3.15	Min.Aisle width for pallets 1000×1200	mm	2077/2458
Performance			
4.1	Travel speed,laden/unladen	km/h	6/6
4.2	Lift speed,laden/unladen	mm/s	30/35
4.3	Lowering speed,laden/unladen	mm/s	40/35
4.4	Gradeability,laden/unladen	%	6/16
Electrical configuration			
5.1	Drive motor/ Lift motor	KW	AC 1.5/DC 1.2/DC 0.15
5.2	Brake		ZAPI
Battery			
6.1	Battery voltage/capacity	V/Ah	Lead-acid battery 24/270 Lithium battery (Optional) 24/200
6.2	Controlller		ZAPI ZAPI
6.3	Battery	kg	247 105
6.4	Service weight (with battery)	kg	831 675

* Details of specifications and equipment are based on information available at time of printing and may change without notice.



ANHUI HELI CO., LTD.

ADD: NO.668 Fangxing Street, Economical Development Zone, Hefei, P.R.China
 TEL: (86 551)63639068 (America) 63639258 (Europe) 63639358 (Asia)
 63662105 (Africa & Middle East) 63639530 (Key Accounts division)
 63662105 (Wheel loader)
 FAX: (86 551)63639966
 WEBSITE: <http://www.heliforklift.net>
 Email: heli@helichina.net

AUTHORIZED DEALER